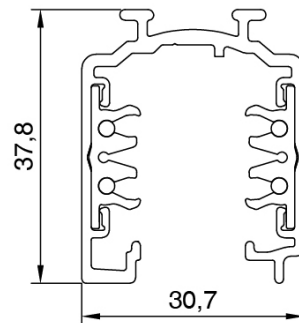
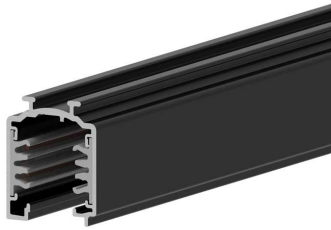


## EUROSTANDARD PLUS TRACK DALI

Three-phase dimmable tracks with three circuits.



CODE		FLUX	SIZE	CERTIFICATIONS
15AA3DA			3000mm	CE IP 20

### Optics

DALI ON/OFF version for ceiling/suspension installation.

### Body

Aluminum.

### Technical features

- The conductors are integrated in the track by means of rigid extruded profile made from insulating material guaranteeing high dielectric strength
- The 3 separate circuits consisting of 3 phase conductors and a common neutral allow for 3 lighting configurations to be switched individually
- The 3-phase supply allows for an overall loading of 16A (10500 VA) which can be divided among the 3 circuits (3x3500 VA)
- The earth, positioned on the side, leads to an asymmetrical structure of the track. As a consequence couplers must be selected carefully

### Legal references

In compliance with the safety standards EN 60 598-1 and UNI EN 12464-1 (lighting for working places).

### Wiring

RE: Standard wiring is 230-240V/50-60Hz with power factor >0.97